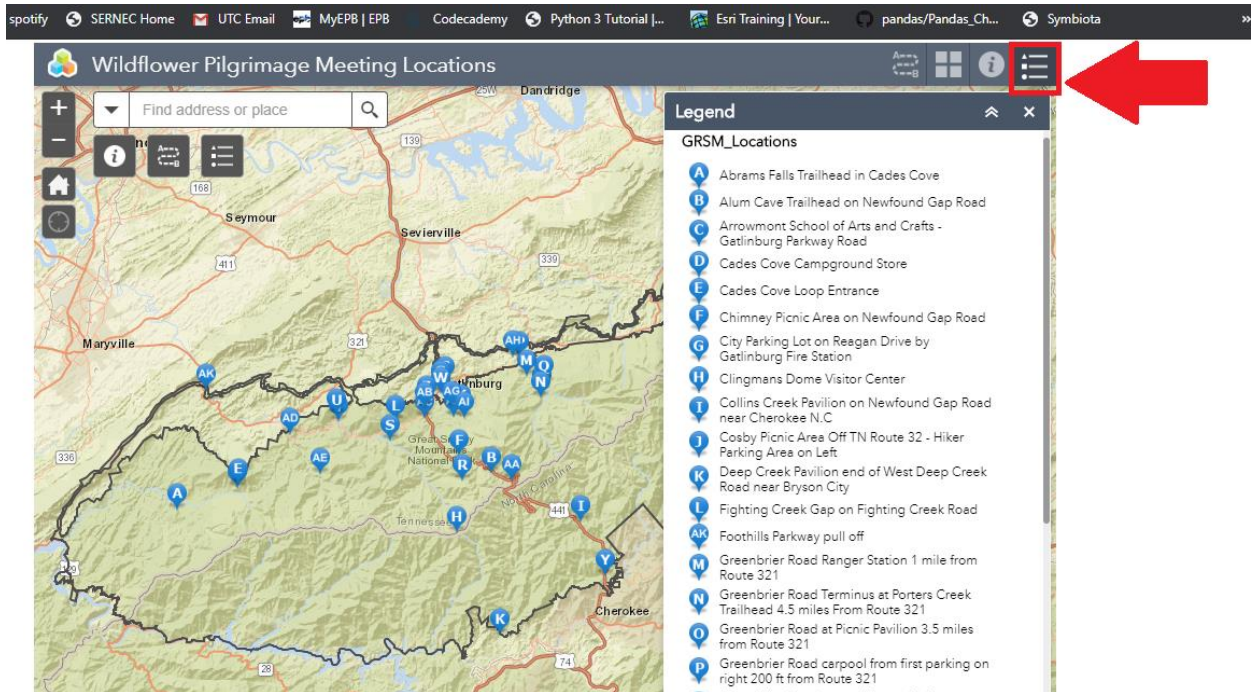


Wildflower Pilgrimage Interactive Map Frequently Asked Questions

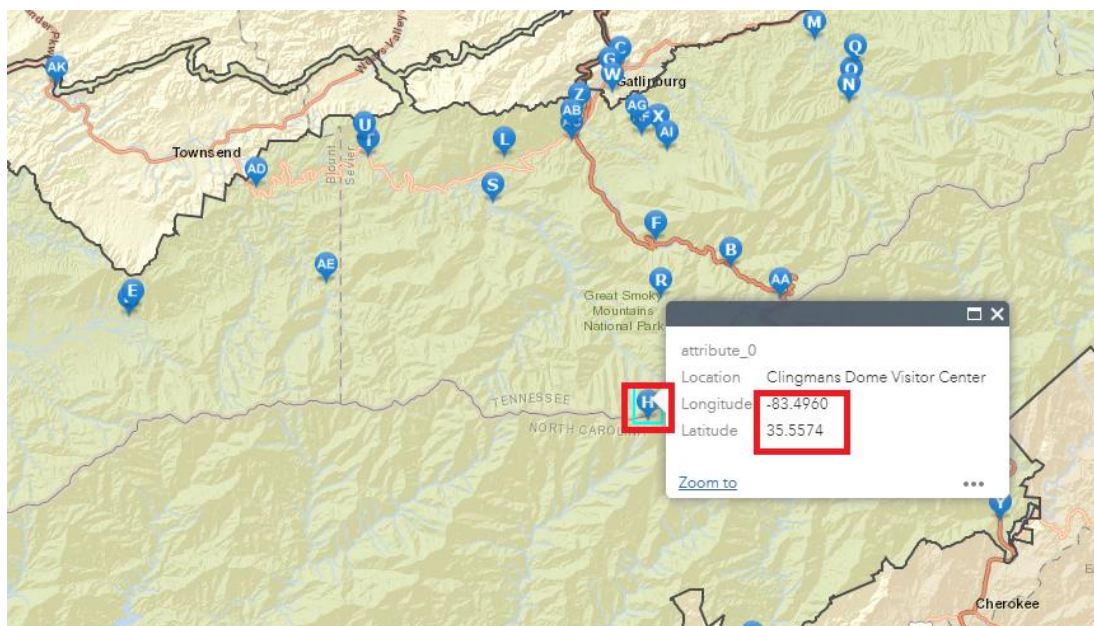
1. How do I know what letter corresponds to what meeting location?

Click on the symbol in the top right corner highlighted in the image below. Meeting locations are organized in alphabetical order with the corresponding letter to the right of the location name.



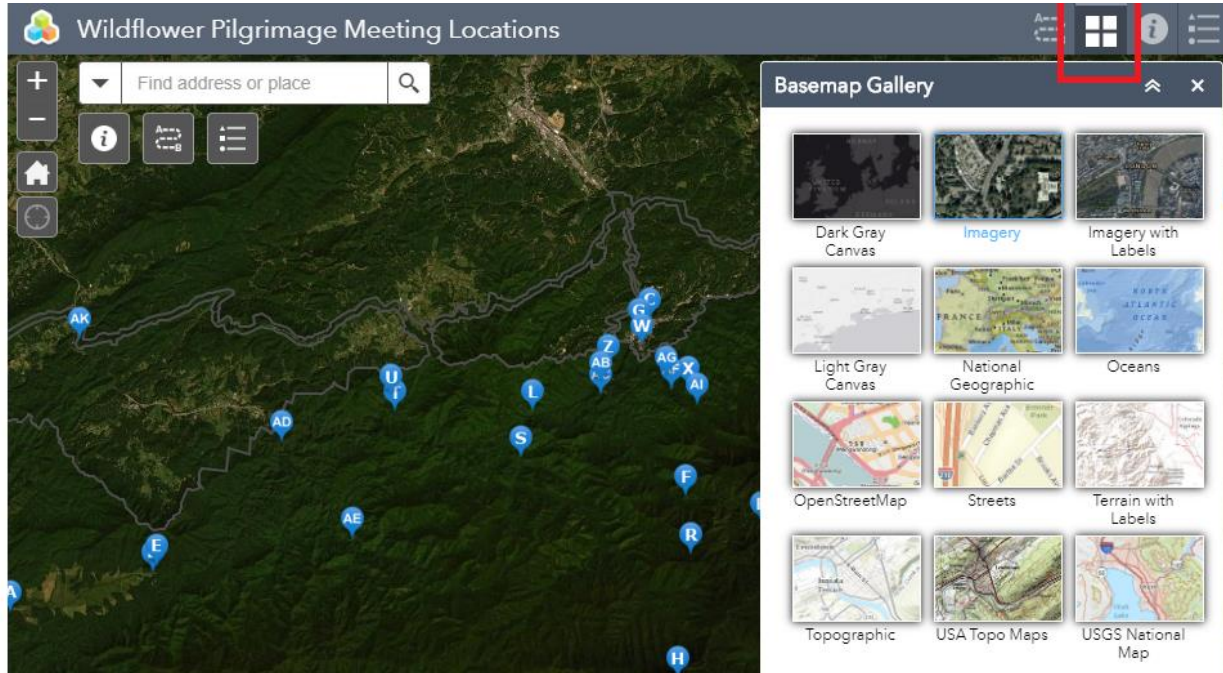
2. How do I get GPS coordinates from this map?

Click on any letter that you would like GPS coordinates for and a box will appear that gives you the meeting location name and the coordinates.



3. How do I view this as a satellite image?

Click the button in the top right corner (it looks like four squares). A new window will appear, and you will have different options of how to view the map. Imagery or Imagery with labels is great for seeing parking locations and trail heads!



4. What do I do if I can't find the letter I'm looking for.

Since there are so many meeting locations the map clusters the locations together when looking at the whole park. If you don't see the letter your looking for right away, try zooming in more. The letters should start to move away from each other and you'll location will be easier to find!

5. How do I get directions to my meeting location?

Click the button highlighted below. Put your location or address on the first line next to the 1. Then click on the pin (this is highlighted in the Directions box) and place it on you meeting locations letter. Then click “Get Directions”. You can save and print your directions by clicking on the icons next to the “Get Directions” button.

